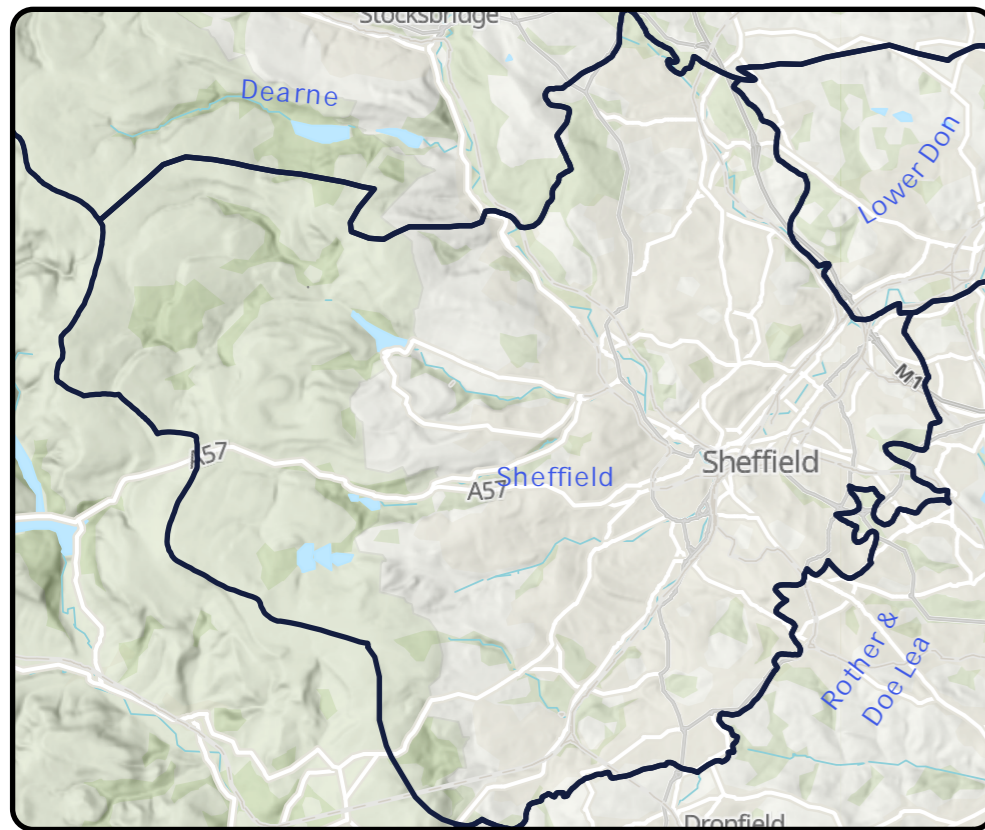


Agden Reservoir Sheffield

Outcome: **Observe**

Did not trigger the required number of indicators in the RBCS process so therefore was not assessed against any criteria but will be reviewed in future DWMP cycles



Key Catchment Statistics	
2020 Population Equivalent	3
2050 Population Equivalent	3
Modelled Consented Storm Overflows	-
Wastewater Pumping Stations	0
Foul and Combined Sewer Length	0km
Surface Water Sewer Length	0km
Site of Special Scientific Interest Present	No
Special Area of Conservation Present	No
Priority River Habitat	No
Catchment Wider Resilience Risk Band	Low

Outcome Summary
Sewer Flooding Risk
As this catchment did not progress through to the BRAVA stage, we have not determined a risk position for our sewer flooding planning objective
Storm Overflow Risk
As this catchment did not progress through to the BRAVA stage we have not determined a risk position for our Storm Overflow planning objective
WwTW Compliance Risk
As this catchment did not progress through to the BRAVA stage or is a descriptive works, we have not determined a risk position for our WwTW Compliance risk planning objective

Risk Based Catchment Screening																	
Catchment Characterisation	Bathing or Shellfish Waters	Discharge to sensitive	Discharge to sensitive	SOAF	CAF	Internal Sewer Flooding	External Sewer Flooding	Pollution Incidents	WwTW O Compliance	WwTW DWF Compliance	Storm Overflows	Other RMA Systems	Planned Residential Development	WINEP	Sewer Collapses	Sewer Blockages	Proceed to BRAVA
Yes	No	No	No	No	No	No	No	No	No	No	No	No	No	No	No	No	NO

National Baseline Risk and Vulnerability Assessment									Bespoke Planning Objectives								
Internal Sewer Flooding 2020 Score	Pollution Risk 2020 Score	Sewer Collapse Risk 2020 Score	Risk of Sewer Flooding (1in 50) 2020 Score	Risk of Sewer Flooding (1in 50) 2050 Score	Storm Overflow Performance 2020 Score	Storm Overflow Performance 2050 Score	Risk of WwTW Compliance Failure 2020	Risk of WwTW Compliance Failure 2050	Annualised Flooding 2020 Score	Annualised Flooding 2030 Score	Annualised Flooding 2050 Score	Overflows Performance 2020 Score	Overflows Performance 2030 Score	Overflows Performance 2050 Score	WwTW Compliance 2020 Score	WwTW Compliance 2030 Score	WwTW Compliance 2050 Score
N/A	N/A	N/A	N/A	N/A	N/A	N/A	N/A	N/A	N/A	N/A	N/A	N/A	N/A	N/A	N/A	N/A	N/A

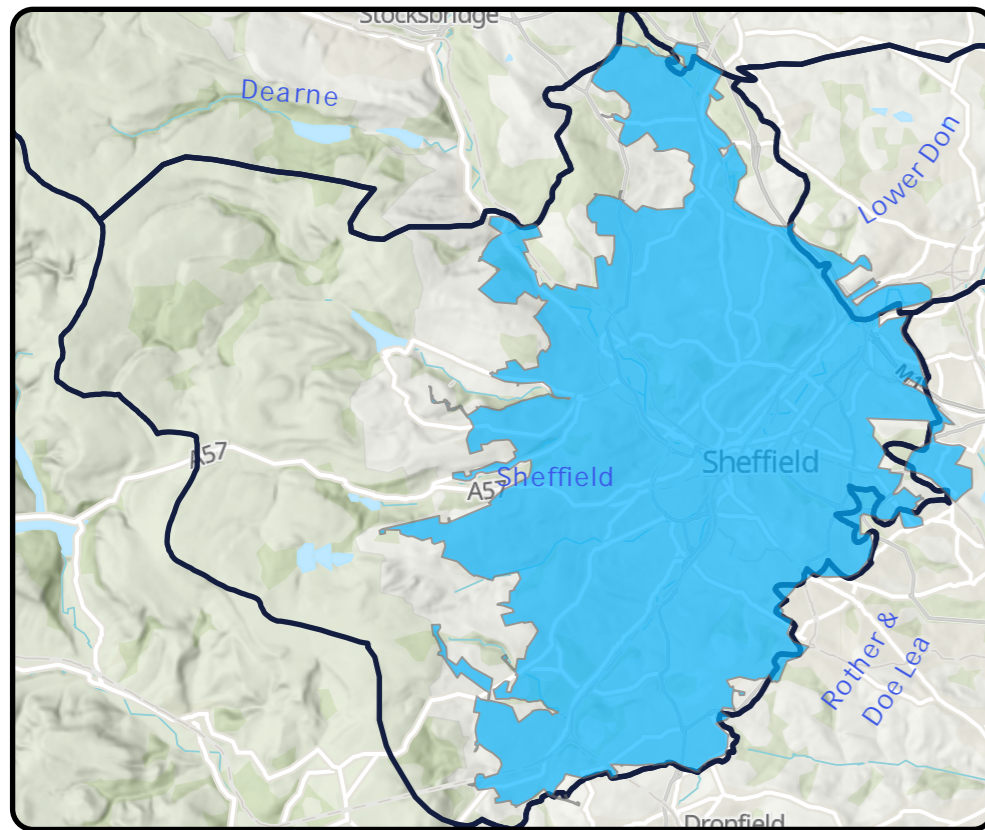
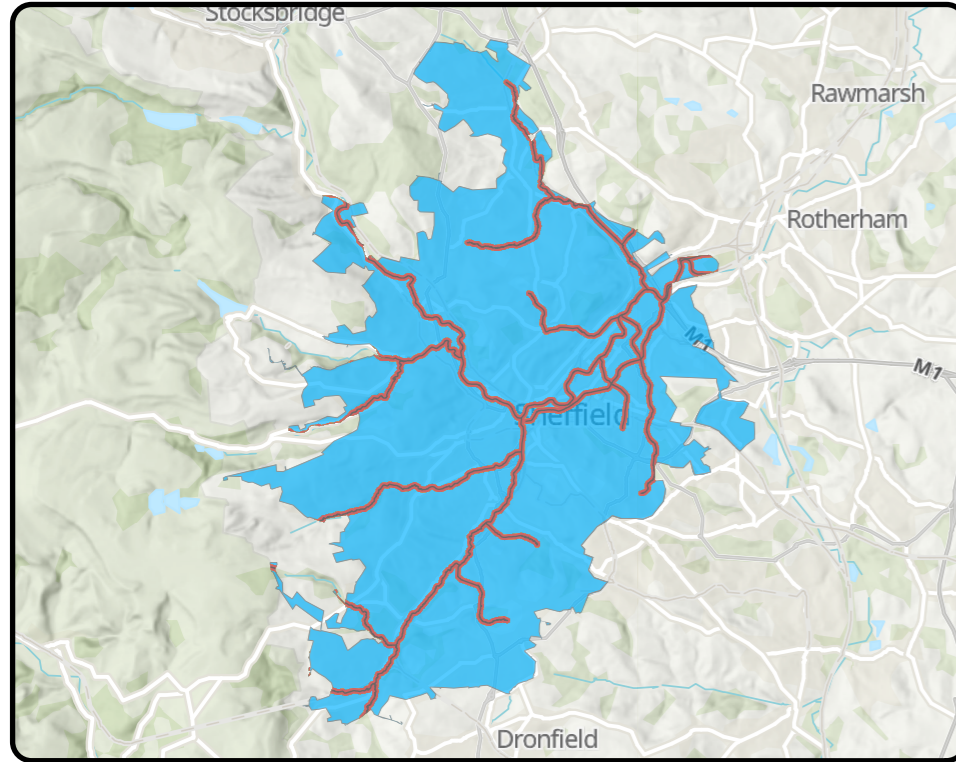
0 Not Significant 1 Moderately Significant Risk 2 Very Significant 0 Lower Risk 1 2 3 4 5 Higher Risk



Blackburn Meadows Sheffield

Outcome: **Promote**

Develop strategic catchment based solution options to address predicted risks and look for potential opportunities for partnership working

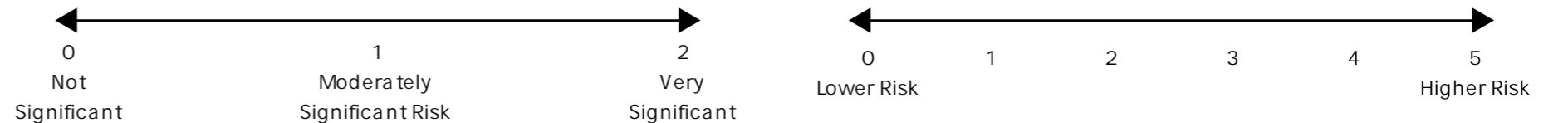


Key Catchment Statistics	
2020 Population Equivalent	559,058
2050 Population Equivalent	650,636
Modelled Consented Storm Overflows	137
Wastewater Pumping Stations	55
Foul and Combined Sewer Length	2,036.3km
Surface Water Sewer Length	604.9km
Site of Special Scientific Interest Present	Yes
Special Area of Conservation Present	No
Priority River Habitat	No
Catchment Wider Resilience Risk Band	High

Outcome Summary
Sewer Flooding Risk
By assessing our hydraulic modelling outputs or where not available, our unmodelled methodology, against our bespoke planning objective for sewer flooding, we believe this catchment represents a high risk for 2050
Storm Overflow Risk
By assessing our hydraulic modelling outputs or where not available, our unmodelled methodology, against our bespoke planning objective for Storm Overflows, we believe this catchment represents a moderate risk for 2050
WwTW Compliance Risk
By assessing our hydraulic modelling outputs or where not available, our unmodelled methodology, against our bespoke planning objective for WwTW Compliance risk, we believe this catchment represents low risk for 2050

Risk Based Catchment Screening																	
Catchment Characterisation	Bathing or Shellfish Waters	Discharge to sensitive	Discharge to sensitive	SOAF	CAF	Internal Sewer Flooding	External Sewer Flooding	Pollution Incidents	WwTW O Compliance	WwTW DWF Compliance	Storm Overflows	Other RMA Systems	Planned Residential Development	WINEP	Sewer Collapses	Sewer Blockages	Proceed to BRAVA
Yes	No	No	No	Yes	No	Yes	Yes	Yes	No	No	Yes	No	Yes	Yes	Yes	Yes	YES

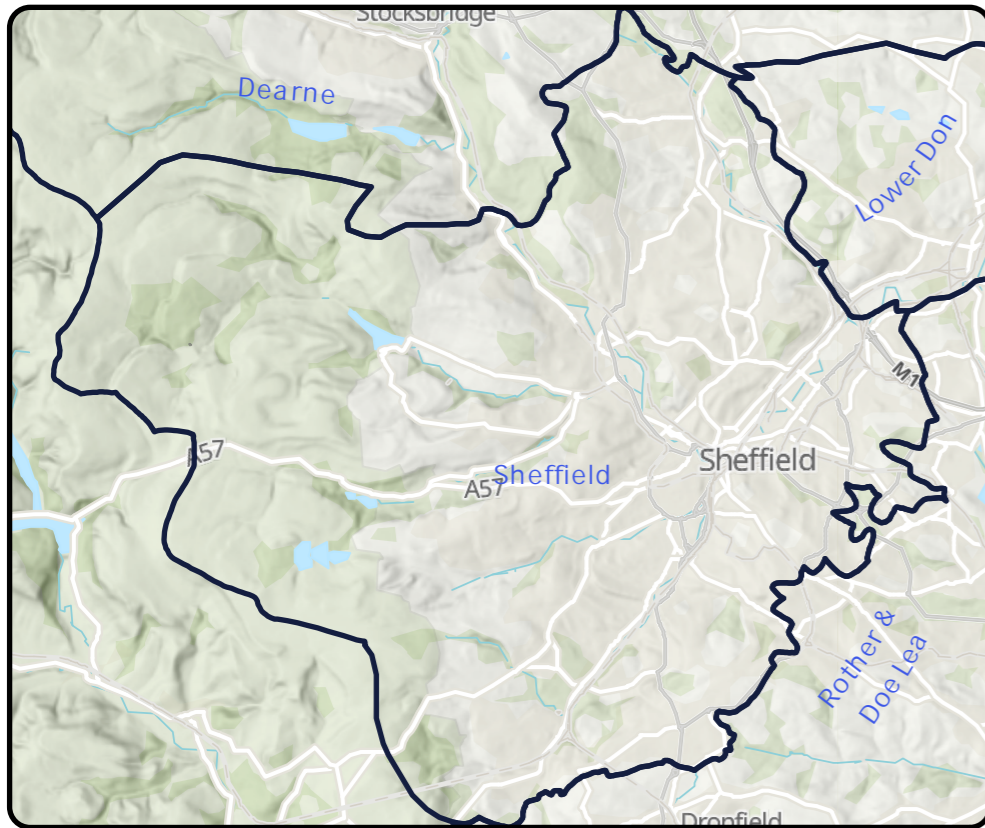
National Baseline Risk and Vulnerability Assessment									Bespoke Planning Objectives								
Internal Sewer Flooding 2020 Score	Pollution Risk 2020 Score	Sewer Collapse Risk 2020 Score	Risk of Sewer Flooding (1in 50) 2020 Score	Risk of Sewer Flooding (1in 50) 2050 Score	Storm Overflow Performance 2020 Score	Storm Overflow Performance 2050 Score	Risk of WwTW Compliance Failure 2020	Risk of WwTW Compliance Failure 2050	Annualised Flooding 2020 Score	Annualised Flooding 2030 Score	Annualised Flooding 2050 Score	Overflows Performance 2020 Score	Overflows Performance 2030 Score	Overflows Performance 2050 Score	WwTW Compliance 2020 Score	WwTW Compliance 2030 Score	WwTW Compliance 2050 Score
2	1	0	2	2	2	2	0	0	3.5	4	4.5	3	3	3	1	1	2



Broggin House Sheffield

Outcome: **Observe**

Did not trigger the required number of indicators in the RBCS process so therefore was not assessed against any criteria but will be reviewed in future DWMP cycles

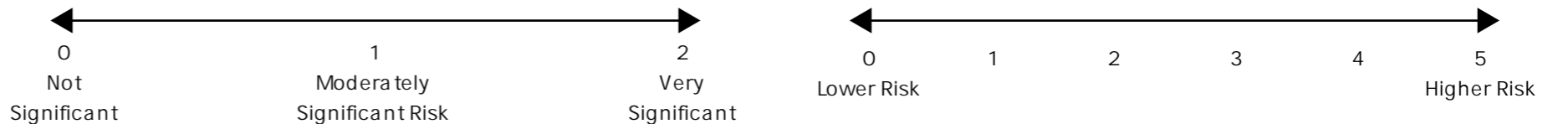


Key Catchment Statistics	
2020 Population Equivalent	3
2050 Population Equivalent	3
Modelled Consented Storm Overflows	-
Wastewater Pumping Stations	0
Foul and Combined Sewer Length	0km
Surface Water Sewer Length	0km
Site of Special Scientific Interest Present	No
Special Area of Conservation Present	No
Priority River Habitat	No
Catchment Wider Resilience Risk Band	Low

Outcome Summary
Sewer Flooding Risk
As this catchment did not progress through to the BRAVA stage, we have not determined a risk position for our sewer flooding planning objective
Storm Overflow Risk
As this catchment did not progress through to the BRAVA stage we have not determined a risk position for our Storm Overflow planning objective
WwTW Compliance Risk
As this catchment did not progress through to the BRAVA stage or is a descriptive works, we have not determined a risk position for our WwTW Compliance risk planning objective

Risk Based Catchment Screening																	
Catchment Characterisation	Bathing or Shellfish Waters	Discharge to sensitive	Discharge to sensitive	SOAF	CAF	Internal Sewer Flooding	External Sewer Flooding	Pollution Incidents	WwTW O Compliance	WwTW DWF Compliance	Storm Overflows	Other RMA Systems	Planned Residential Development	WINEP	Sewer Collapses	Sewer Blockages	Proceed to BRAVA
Yes	No	No	No	No	No	No	No	No	No	No	No	No	No	No	No	No	NO

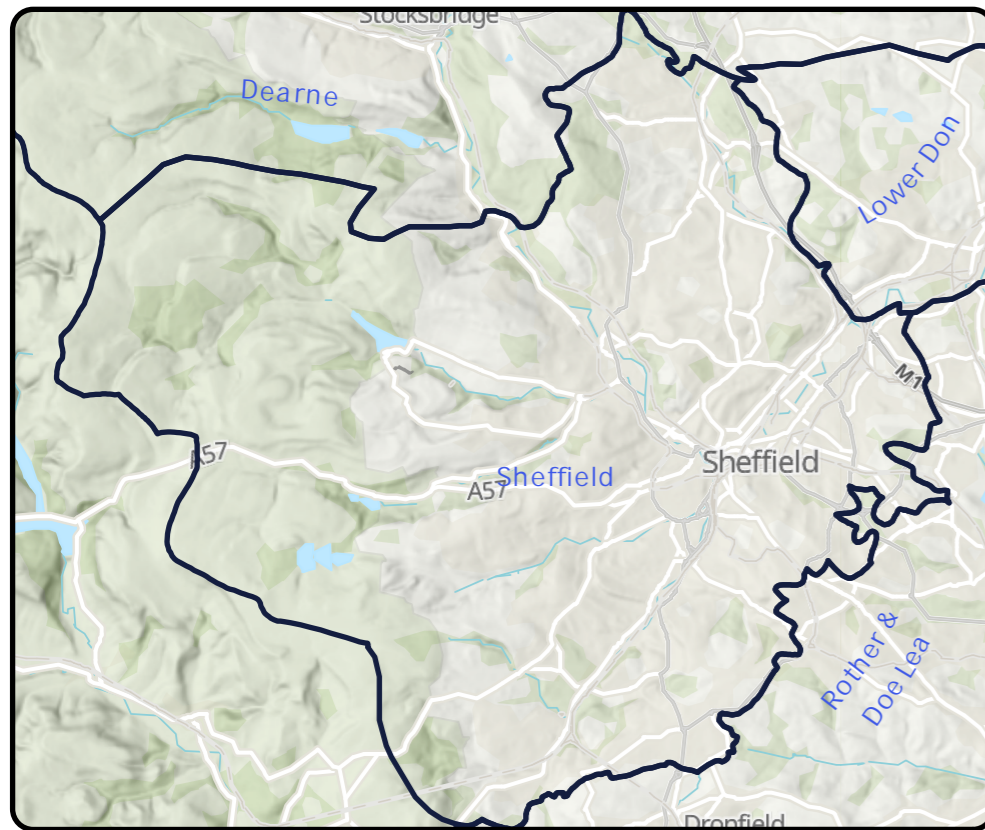
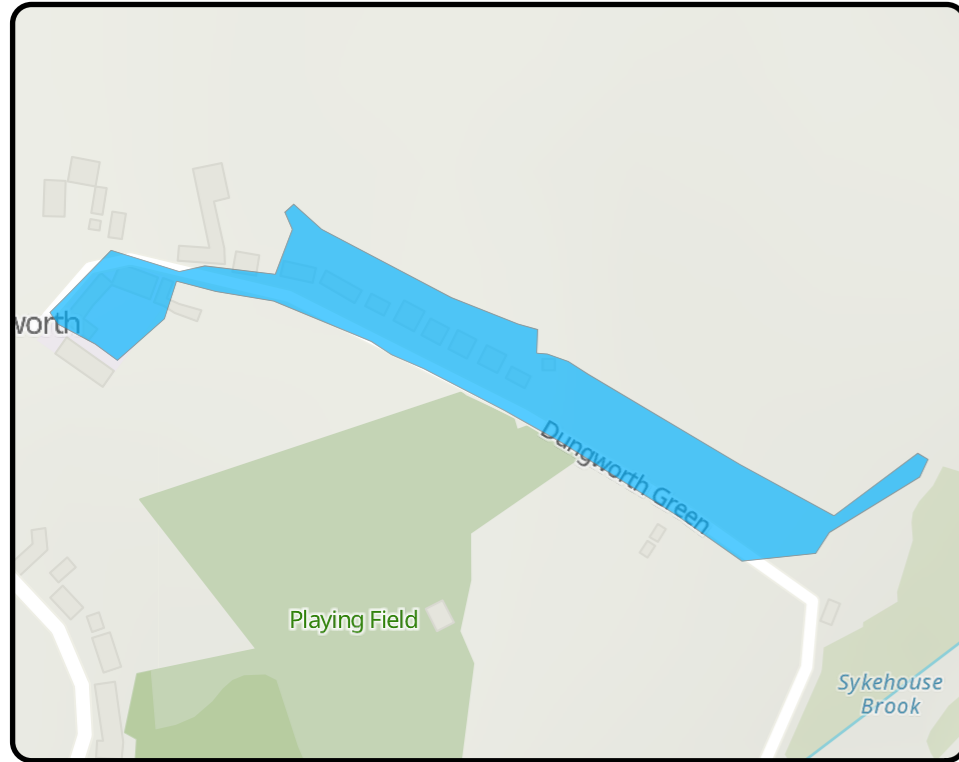
National Baseline Risk and Vulnerability Assessment									Bespoke Planning Objectives								
Internal Sewer Flooding 2020 Score	Pollution Risk 2020 Score	Sewer Collapse Risk 2020 Score	Risk of Sewer Flooding (1in 50) 2020 Score	Risk of Sewer Flooding (1in 50) 2050 Score	Storm Overflow Performance 2020 Score	Storm Overflow Performance 2050 Score	Risk of WwTW Compliance Failure 2020	Risk of WwTW Compliance Failure 2050	Annualised Flooding 2020 Score	Annualised Flooding 2030 Score	Annualised Flooding 2050 Score	Overflows Performance 2020 Score	Overflows Performance 2030 Score	Overflows Performance 2050 Score	WwTW Compliance 2020 Score	WwTW Compliance 2030 Score	WwTW Compliance 2050 Score
N/A	N/A	N/A	N/A	N/A	N/A	N/A	N/A	N/A	N/A	N/A	N/A	N/A	N/A	N/A	N/A	N/A	N/A



Dungworth Sheffield

Outcome: **Observe**

Did not trigger the required number of indicators in the RBCS process so therefore was not assessed against any criteria but will be reviewed in future DWMP cycles

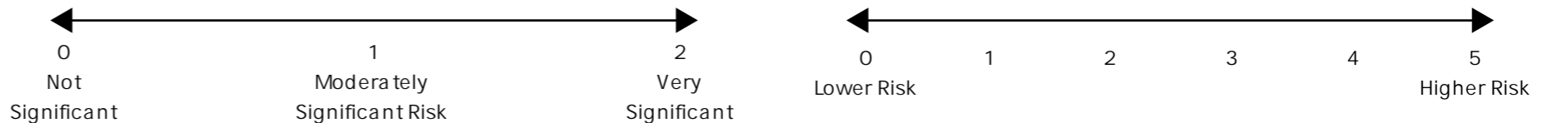


Key Catchment Statistics	
2020 Population Equivalent	35
2050 Population Equivalent	41
Modelled Consented Storm Overflows	-
Wastewater Pumping Stations	0
Foul and Combined Sewer Length	0km
Surface Water Sewer Length	0km
Site of Special Scientific Interest Present	No
Special Area of Conservation Present	No
Priority River Habitat	No
Catchment Wider Resilience Risk Band	Low

Outcome Summary
Sewer Flooding Risk
As this catchment did not progress through to the BRAVA stage, we have not determined a risk position for our sewer flooding planning objective
Storm Overflow Risk
As this catchment did not progress through to the BRAVA stage we have not determined a risk position for our Storm Overflow planning objective
WwTW Compliance Risk
As this catchment did not progress through to the BRAVA stage or is a descriptive works, we have not determined a risk position for our WwTW Compliance risk planning objective

Risk Based Catchment Screening																	
Catchment Characterisation	Bathing or Shellfish Waters	Discharge to sensitive	Discharge to sensitive	SOAF	CAF	Internal Sewer Flooding	External Sewer Flooding	Pollution Incidents	WwTW O Compliance	WwTW DWF Compliance	Storm Overflows	Other RMA Systems	Planned Residential Development	WINEP	Sewer Collapses	Sewer Blockages	Proceed to BRAVA
Yes	No	No	No	No	No	No	No	No	No	No	No	No	No	No	No	No	NO

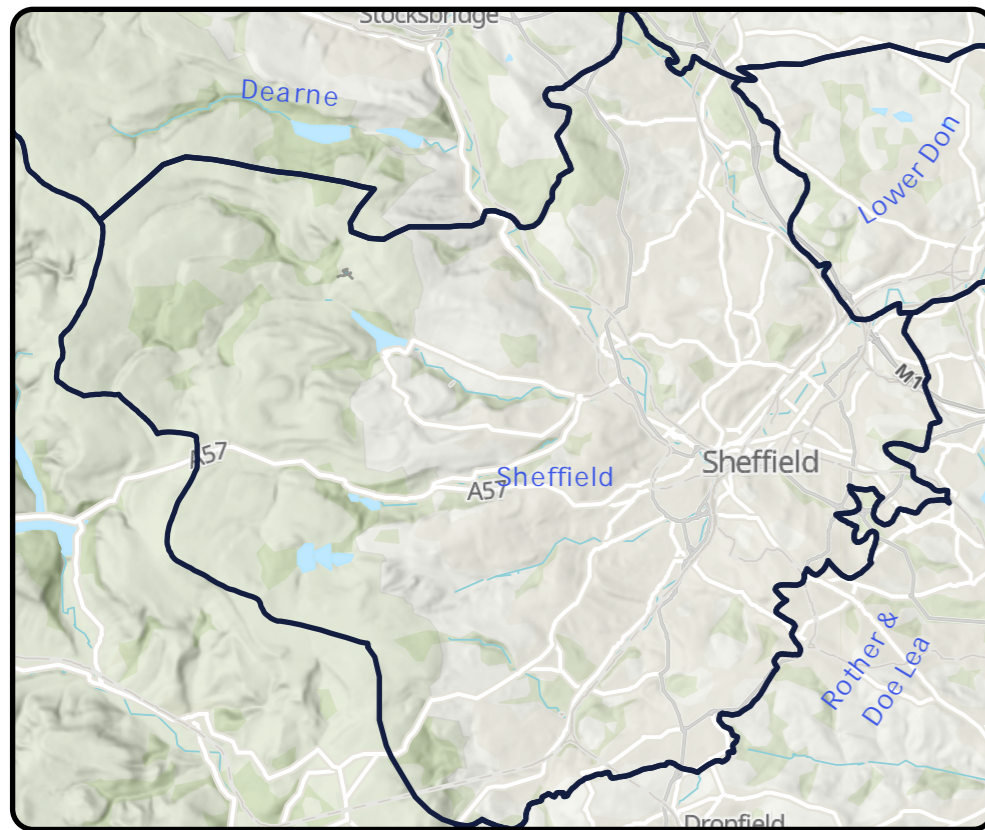
National Baseline Risk and Vulnerability Assessment									Bespoke Planning Objectives								
Internal Sewer Flooding 2020 Score	Pollution Risk 2020 Score	Sewer Collapse Risk 2020 Score	Risk of Sewer Flooding (1in 50) 2020 Score	Risk of Sewer Flooding (1in 50) 2050 Score	Storm Overflow Performance 2020 Score	Storm Overflow Performance 2050 Score	Risk of WwTW Compliance Failure 2020	Risk of WwTW Compliance Failure 2050	Annualised Flooding 2020 Score	Annualised Flooding 2030 Score	Annualised Flooding 2050 Score	Overflows Performance 2020 Score	Overflows Performance 2030 Score	Overflows Performance 2050 Score	WwTW Compliance 2020 Score	WwTW Compliance 2030 Score	WwTW Compliance 2050 Score
N/A	N/A	N/A	N/A	N/A	N/A	N/A	N/A	N/A	N/A	N/A	N/A	N/A	N/A	N/A	N/A	N/A	N/A



High Bradfield Sheffield

Outcome: **Observe**

Did not trigger the required number of indicators in the RBCS process so therefore was not assessed against any criteria but will be reviewed in future DWMP cycles



Key Catchment Statistics	
2020 Population Equivalent	51
2050 Population Equivalent	58
Modelled Consented Storm Overflows	-
Wastewater Pumping Stations	0
Foul and Combined Sewer Length	0.4km
Surface Water Sewer Length	0.2km
Site of Special Scientific Interest Present	No
Special Area of Conservation Present	No
Priority River Habitat	No
Catchment Wider Resilience Risk Band	Low

Outcome Summary
Sewer Flooding Risk
As this catchment did not progress through to the BRAVA stage, we have not determined a risk position for our sewer flooding planning objective
Storm Overflow Risk
As this catchment did not progress through to the BRAVA stage we have not determined a risk position for our Storm Overflow planning objective
WwTW Compliance Risk
As this catchment did not progress through to the BRAVA stage or is a descriptive works, we have not determined a risk position for our WwTW Compliance risk planning objective

Risk Based Catchment Screening																	
Catchment Characterisation	Bathing or Shellfish Waters	Discharge to sensitive	Discharge to sensitive	SOAF	CAF	Internal Sewer Flooding	External Sewer Flooding	Pollution Incidents	WwTW O Compliance	WwTW DWF Compliance	Storm Overflows	Other RMA Systems	Planned Residential Development	WINEP	Sewer Collapses	Sewer Blockages	Proceed to BRAVA
Yes	No	No	No	No	No	No	No	No	No	No	No	No	No	No	No	No	NO

National Baseline Risk and Vulnerability Assessment									Bespoke Planning Objectives								
Internal Sewer Flooding 2020 Score	Pollution Risk 2020 Score	Sewer Collapse Risk 2020 Score	Risk of Sewer Flooding (1in 50) 2020 Score	Risk of Sewer Flooding (1in 50) 2050 Score	Storm Overflow Performance 2020 Score	Storm Overflow Performance 2050 Score	Risk of WwTW Compliance Failure 2020	Risk of WwTW Compliance Failure 2050	Annualised Flooding 2020 Score	Annualised Flooding 2030 Score	Annualised Flooding 2050 Score	Overflows Performance 2020 Score	Overflows Performance 2030 Score	Overflows Performance 2050 Score	WwTW Compliance 2020 Score	WwTW Compliance 2030 Score	WwTW Compliance 2050 Score
N/A	N/A	N/A	N/A	N/A	N/A	N/A	N/A	N/A	N/A	N/A	N/A	N/A	N/A	N/A	N/A	N/A	N/A

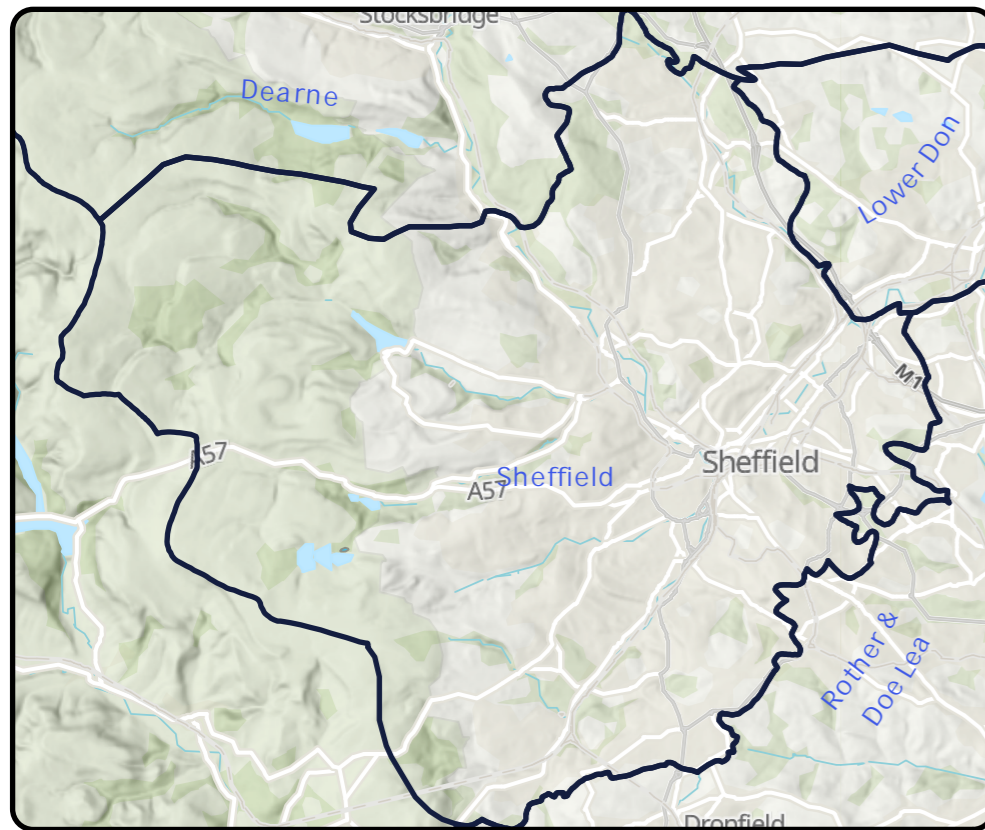
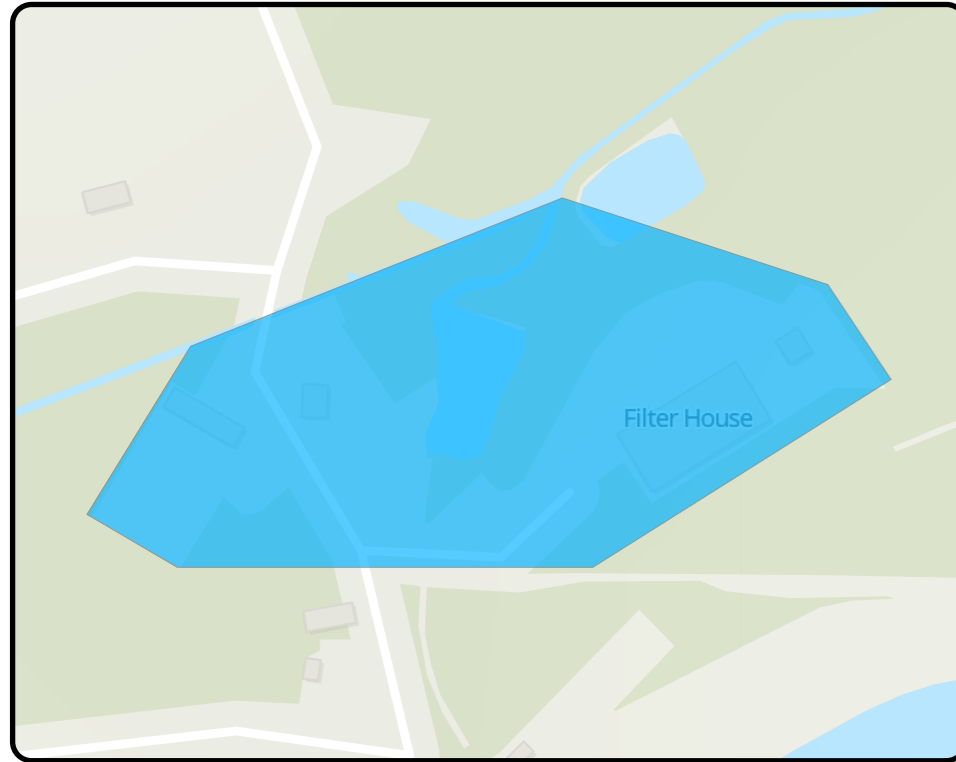
0 Not Significant 1 Moderately Significant Risk 2 Very Significant 0 Lower Risk 1 2 3 4 5 Higher Risk



Redmires No. 1 Sheffield

Outcome: **Observe**

Did not trigger the required number of indicators in the RBCS process so therefore was not assessed against any criteria but will be reviewed in future DWMP cycles



Key Catchment Statistics	
2020 Population Equivalent	7
2050 Population Equivalent	8
Modelled Consented Storm Overflows	-
Wastewater Pumping Stations	0
Foul and Combined Sewer Length	0km
Surface Water Sewer Length	0km
Site of Special Scientific Interest Present	No
Special Area of Conservation Present	No
Priority River Habitat	No
Catchment Wider Resilience Risk Band	Low

Outcome Summary
Sewer Flooding Risk
As this catchment did not progress through to the BRAVA stage, we have not determined a risk position for our sewer flooding planning objective
Storm Overflow Risk
As this catchment did not progress through to the BRAVA stage we have not determined a risk position for our Storm Overflow planning objective
WwTW Compliance Risk
As this catchment did not progress through to the BRAVA stage or is a descriptive works, we have not determined a risk position for our WwTW Compliance risk planning objective

Risk Based Catchment Screening																	
Catchment Characterisation	Bathing or Shellfish Waters	Discharge to sensitive	Discharge to sensitive	SOAF	CAF	Internal Sewer Flooding	External Sewer Flooding	Pollution Incidents	WwTW O Compliance	WwTW DWF Compliance	Storm Overflows	Other RMA Systems	Planned Residential Development	WINEP	Sewer Collapses	Sewer Blockages	Proceed to BRAVA
Yes	No	No	No	No	No	No	No	No	No	No	No	No	No	No	No	No	NO

National Baseline Risk and Vulnerability Assessment									Bespoke Planning Objectives								
Internal Sewer Flooding 2020 Score	Pollution Risk 2020 Score	Sewer Collapse Risk 2020 Score	Risk of Sewer Flooding (1in 50) 2020 Score	Risk of Sewer Flooding (1in 50) 2050 Score	Storm Overflow Performance 2020 Score	Storm Overflow Performance 2050 Score	Risk of WwTW Compliance Failure 2020	Risk of WwTW Compliance Failure 2050	Annualised Flooding 2020 Score	Annualised Flooding 2030 Score	Annualised Flooding 2050 Score	Overflows Performance 2020 Score	Overflows Performance 2030 Score	Overflows Performance 2050 Score	WwTW Compliance 2020 Score	WwTW Compliance 2030 Score	WwTW Compliance 2050 Score
N/A	N/A	N/A	N/A	N/A	N/A	N/A	N/A	N/A	N/A	N/A	N/A	N/A	N/A	N/A	N/A	N/A	N/A

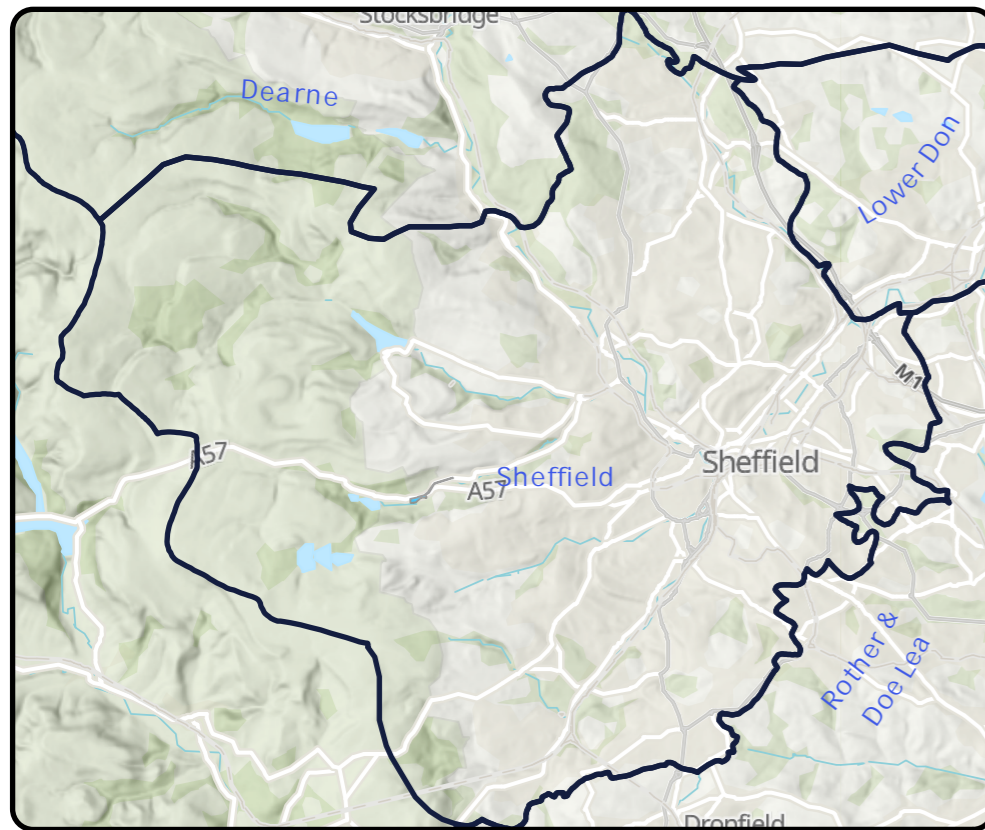
0 Not Significant 1 Moderately Significant Risk 2 Very Significant 0 Lower Risk 1 2 3 4 5 Higher Risk



Rivelin Sheffield

Outcome: **Observe**

Did not trigger the required number of indicators in the RBCS process so therefore was not assessed against any criteria but will be reviewed in future DWMP cycles

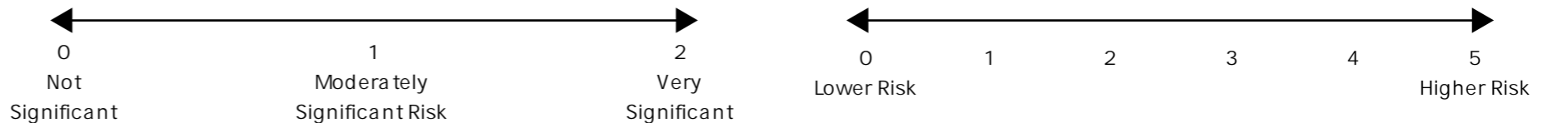


Key Catchment Statistics	
2020 Population Equivalent	18
2050 Population Equivalent	22
Modelled Consented Storm Overflows	-
Wastewater Pumping Stations	0
Foul and Combined Sewer Length	0km
Surface Water Sewer Length	0km
Site of Special Scientific Interest Present	No
Special Area of Conservation Present	No
Priority River Habitat	No
Catchment Wider Resilience Risk Band	Low

Outcome Summary
Sewer Flooding Risk
As this catchment did not progress through to the BRAVA stage, we have not determined a risk position for our sewer flooding planning objective
Storm Overflow Risk
As this catchment did not progress through to the BRAVA stage we have not determined a risk position for our Storm Overflow planning objective
WwTW Compliance Risk
As this catchment did not progress through to the BRAVA stage or is a descriptive works, we have not determined a risk position for our WwTW Compliance risk planning objective

Risk Based Catchment Screening																	
Catchment Characterisation	Bathing or Shellfish Waters	Discharge to sensitive	Discharge to sensitive	SOAF	CAF	Internal Sewer Flooding	External Sewer Flooding	Pollution Incidents	WwTW O Compliance	WwTW DWF Compliance	Storm Overflows	Other RMA Systems	Planned Residential Development	WINEP	Sewer Collapses	Sewer Blockages	Proceed to BRAVA
Yes	No	No	No	No	No	No	No	No	No	No	No	No	No	No	No	No	NO

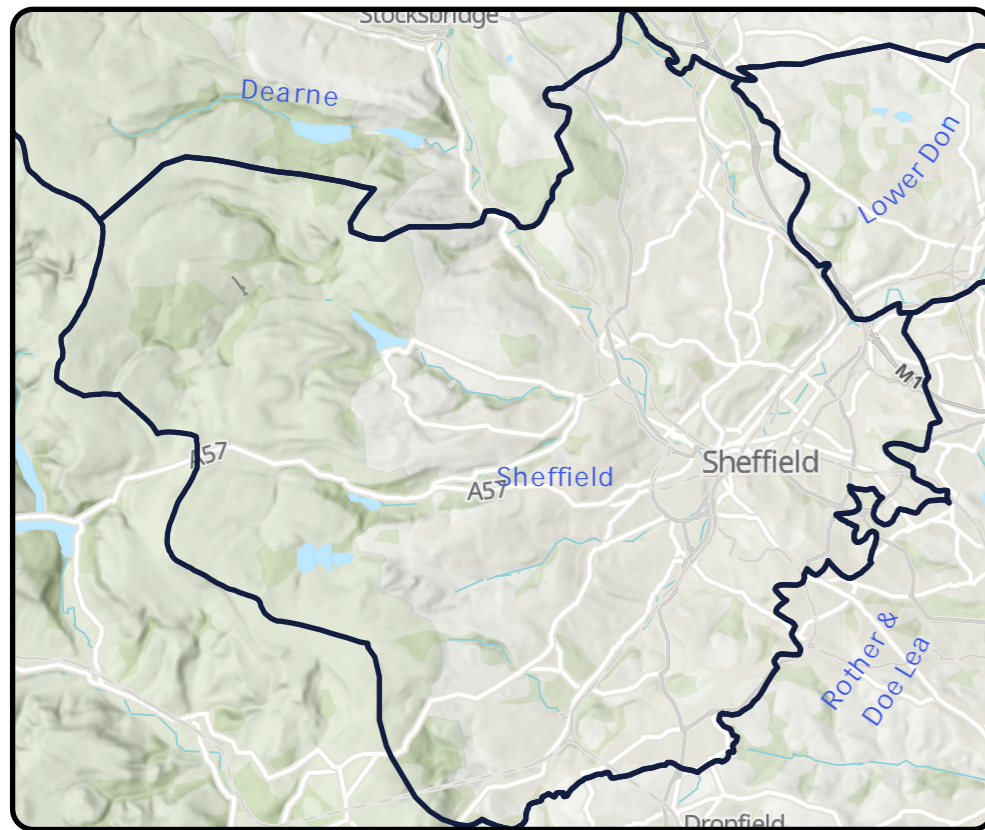
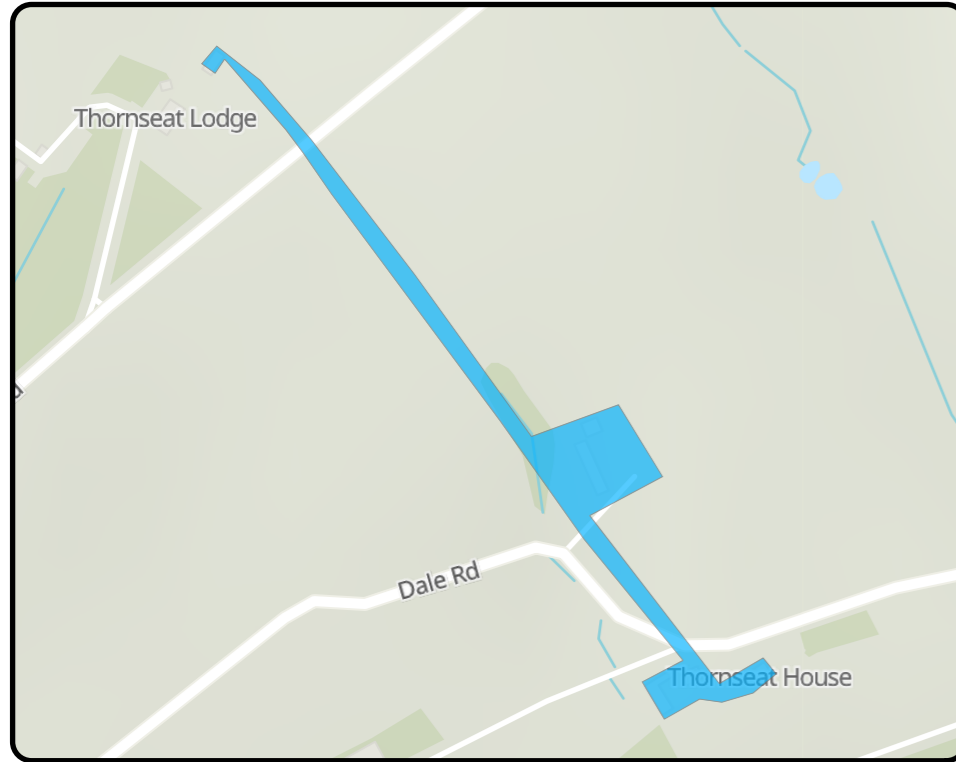
National Baseline Risk and Vulnerability Assessment									Bespoke Planning Objectives								
Internal Sewer Flooding 2020 Score	Pollution Risk 2020 Score	Sewer Collapse Risk 2020 Score	Risk of Sewer Flooding (1in 50) 2020 Score	Risk of Sewer Flooding (1in 50) 2050 Score	Storm Overflow Performance 2020 Score	Storm Overflow Performance 2050 Score	Risk of WwTW Compliance Failure 2020	Risk of WwTW Compliance Failure 2050	Annualised Flooding 2020 Score	Annualised Flooding 2030 Score	Annualised Flooding 2050 Score	Overflows Performance 2020 Score	Overflows Performance 2030 Score	Overflows Performance 2050 Score	WwTW Compliance 2020 Score	WwTW Compliance 2030 Score	WwTW Compliance 2050 Score
N/A	N/A	N/A	N/A	N/A	N/A	N/A	N/A	N/A	N/A	N/A	N/A	N/A	N/A	N/A	N/A	N/A	N/A



Thornseat Sheffield

Outcome: **Observe**

Did not trigger the required number of indicators in the RBCS process so therefore was not assessed against any criteria but will be reviewed in future DWMP cycles

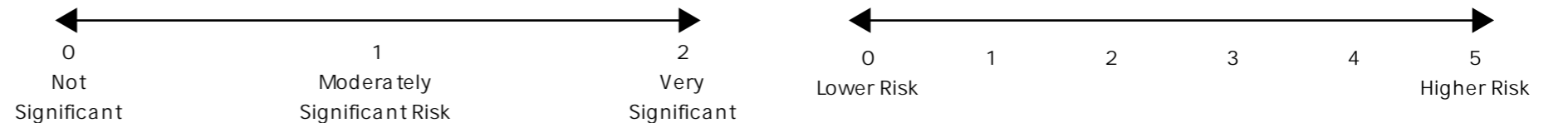


Key Catchment Statistics	
2020 Population Equivalent	10
2050 Population Equivalent	10
Modelled Consented Storm Overflows	-
Wastewater Pumping Stations	0
Foul and Combined Sewer Length	0km
Surface Water Sewer Length	0km
Site of Special Scientific Interest Present	No
Special Area of Conservation Present	No
Priority River Habitat	No
Catchment Wider Resilience Risk Band	Low

Outcome Summary
Sewer Flooding Risk
As this catchment did not progress through to the BRAVA stage, we have not determined a risk position for our sewer flooding planning objective
Storm Overflow Risk
As this catchment did not progress through to the BRAVA stage we have not determined a risk position for our Storm Overflow planning objective
WwTW Compliance Risk
As this catchment did not progress through to the BRAVA stage or is a descriptive works, we have not determined a risk position for our WwTW Compliance risk planning objective

Risk Based Catchment Screening																	
Catchment Characterisation	Bathing or Shellfish Waters	Discharge to sensitive	Discharge to sensitive	SOAF	CAF	Internal Sewer Flooding	External Sewer Flooding	Pollution Incidents	WwTW O Compliance	WwTW DWF Compliance	Storm Overflows	Other RMA Systems	Planned Residential Development	WINEP	Sewer Collapses	Sewer Blockages	Proceed to BRAVA
Yes	No	No	No	No	No	No	No	No	No	No	No	No	No	No	No	No	NO

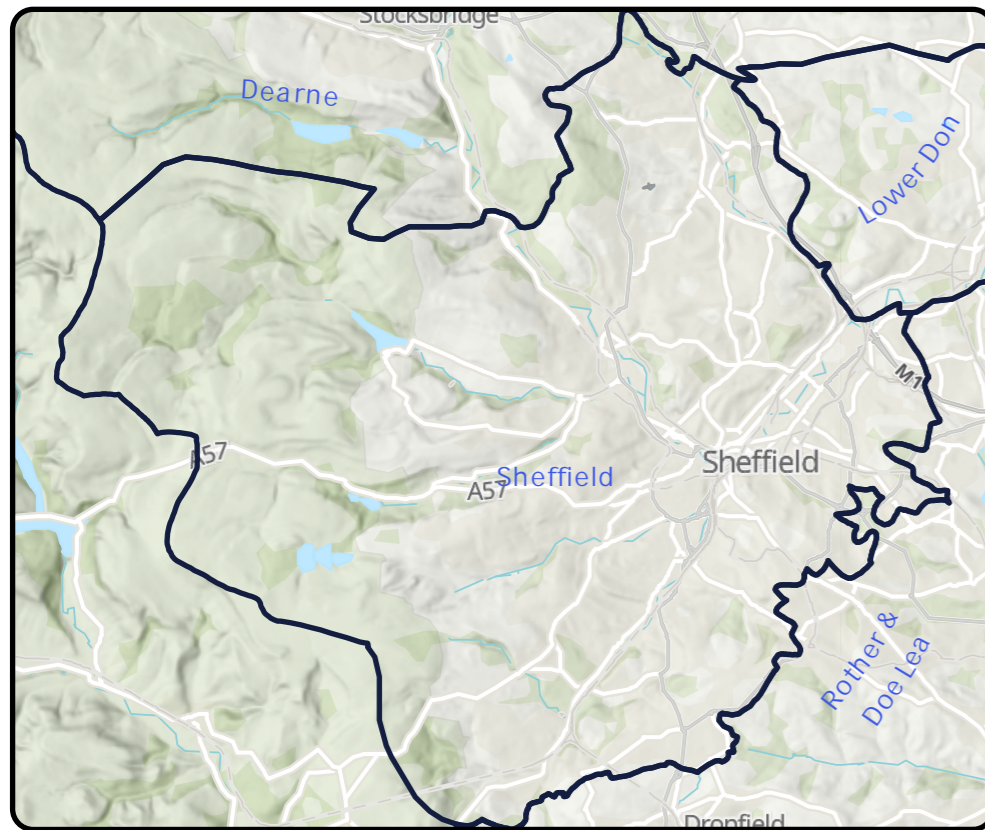
National Baseline Risk and Vulnerability Assessment									Bespoke Planning Objectives								
Internal Sewer Flooding 2020 Score	Pollution Risk 2020 Score	Sewer Collapse Risk 2020 Score	Risk of Sewer Flooding (1in 50) 2020 Score	Risk of Sewer Flooding (1in 50) 2050 Score	Storm Overflow Performance 2020 Score	Storm Overflow Performance 2050 Score	Risk of WwTW Compliance Failure 2020	Risk of WwTW Compliance Failure 2050	Annualised Flooding 2020 Score	Annualised Flooding 2030 Score	Annualised Flooding 2050 Score	Overflows Performance 2020 Score	Overflows Performance 2030 Score	Overflows Performance 2050 Score	WwTW Compliance 2020 Score	WwTW Compliance 2030 Score	WwTW Compliance 2050 Score
N/A	N/A	N/A	N/A	N/A	N/A	N/A	N/A	N/A	N/A	N/A	N/A	N/A	N/A	N/A	N/A	N/A	N/A



Whitley Sheffield

Outcome: **Monitor**

Continue to monitor all potential risks in the catchment and promote once a suitable threshold is breached



Key Catchment Statistics	
2020 Population Equivalent	36
2050 Population Equivalent	42
Modelled Consented Storm Overflows	-
Wastewater Pumping Stations	0
Foul and Combined Sewer Length	0.2km
Surface Water Sewer Length	0km
Site of Special Scientific Interest Present	No
Special Area of Conservation Present	No
Priority River Habitat	No
Catchment Wider Resilience Risk Band	Low

Outcome Summary
Sewer Flooding Risk
By assessing our hydraulic modelling outputs or where not available, our unmodelled methodology, against our bespoke planning objective for sewer flooding, we believe this catchment represents low risk for 2050
Storm Overflow Risk
By assessing our hydraulic modelling outputs or where not available, our unmodelled methodology, against our bespoke planning objective for Storm Overflows, we believe this catchment represents low risk for 2050
WwTW Compliance Risk
As this catchment did not progress through to the BRAVA stage or is a descriptive works, we have not determined a risk position for our WwTW Compliance risk planning objective

Risk Based Catchment Screening																	
Catchment Characterisation	Bathing or Shellfish Waters	Discharge to sensitive	Discharge to sensitive	SOAF	CAF	Internal Sewer Flooding	External Sewer Flooding	Pollution Incidents	WwTW O Compliance	WwTW DWF Compliance	Storm Overflows	Other RMA Systems	Planned Residential Development	WINEP	Sewer Collapses	Sewer Blockages	Proceed to BRAVA
Yes	No	No	No	No	Yes	No	No	No	No	No	No	No	No	No	No	No	YES

National Baseline Risk and Vulnerability Assessment									Bespoke Planning Objectives								
Internal Sewer Flooding 2020 Score	Pollution Risk 2020 Score	Sewer Collapse Risk 2020 Score	Risk of Sewer Flooding (1in 50) 2020 Score	Risk of Sewer Flooding (1in 50) 2050 Score	Storm Overflow Performance 2020 Score	Storm Overflow Performance 2050 Score	Risk of WwTW Compliance Failure 2020	Risk of WwTW Compliance Failure 2050	Annualised Flooding 2020 Score	Annualised Flooding 2030 Score	Annualised Flooding 2050 Score	Overflows Performance 2020 Score	Overflows Performance 2030 Score	Overflows Performance 2050 Score	WwTW Compliance 2020 Score	WwTW Compliance 2030 Score	WwTW Compliance 2050 Score
0	0	0	0	0	N/A	N/A	N/A	N/A	0	0	0	0	0	0	N/A	N/A	N/A

